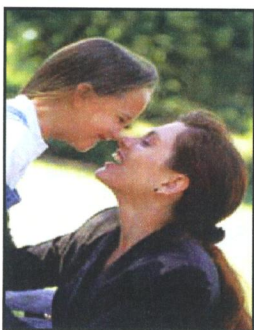


Permanent Housing Program with Supportive Services in the newly re-modeled Johnson Park Apts.

Partners

The Mohawk Valley Housing Coalition / Utica-Oneida County Continuum of Care with over 50 area organizations work together to provide a continuum of services for families and children.



All referrals will be made to Central New York Services, Inc. and the OC Adult Single Point of Access and Accountability.

Some of the Partnering Agencies are:

- OC Dept. of Mental Health
- OC Dept. of Social Services
- OC Family Treatment Court / Model Court
- OC Workforce Investment Board
- Family Services of the Mohawk Valley
- Insight House
- Community Health & Behavioral Services
- Mohawk Valley Community Action
- United Way of the Valley & Greater Utica Area
- City of Utica Section 8 Program
- NYS Division of Parole
- Johnson Park Center

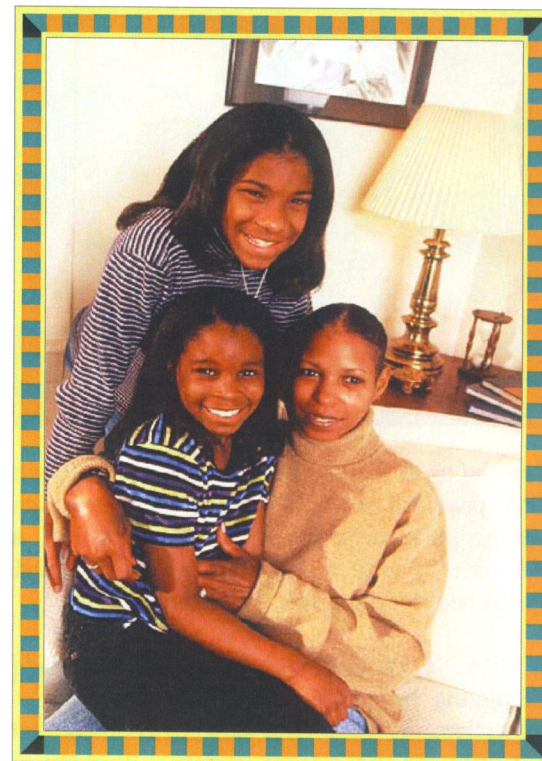
“Equal Housing Opportunity Agency”



JCTOD Outreach, Inc. dba
Johnson Park Center
P.O. Box 160, Utica, NY 13503-0160
www.johnsonparkcenter.org

JPA Supportive Housing Program

Just Right For Me & My Children!



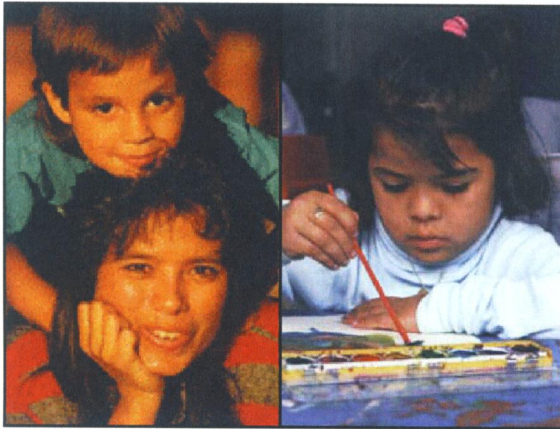
A NEW START!

JOHNSON PARK APARTMENTS

SUPPORTIVE HOUSING PROGRAM

Just Right For Me & My Children!

JPA SUPPORTIVE HOUSING



The Johnson Park Apartments Housing Program (JPA) provides an affordable permanent supportive housing program to women 18 years of age and older with substance abuse and/or mental health disabilities who have children.

At JPA, a mother can focus on successfully completing her treatment program in a supportive, structured and safe environment that is free from survival-related anxiety. Working with your Case Manager, you will establish a Service / Intervention Plan with a strategy and timeline designed to meet your goals, build hope, and develop confidence so you can live independently with your children, become a better parent and obtain employment.

The JPA Supportive Housing Program is conveniently located in the City of Utica in recently remodeled homes. Each family has its own apartment in a beautiful and clean community. Handicap adaptable / accessible apartments are available too.



Eligibility

- Homeless mother or mother with a significant risk of homelessness.
- Confirmed as parent/custodian of child(ren) under 18 years of age.
- Have a diagnosis of substance abuse and/or mental health disabilities.
- Participate in Supportive Services.
- Meet TANF low income eligibility requirements.



Support Services

- > Case Management Services
- > Preventative Services
- > Child Care Referrals
- > Educational Services
- > Recreation
- > Parenting Skills Training
- > Mental Health Services
- > Life Skills Training
- > Medical Services
- > Vocational & Job Training Services
- > Employment Opportunities
- > Substance Abuse Services



Conveniently Located *(Less than a Mile)*

- Martin Luther King, Jr. & Watson Williams Elementary Schools
- Head Start, NYS Licensed Day Care
- Mental Health & Substance Abuse Treatment Services
- Laundromat, Grocery Stores, Pharmacy, Medical Services
- Pizzeria, Restaurants, Food Pantry
- Johnson Park, MLK School Park, Museum, Zoo, Tennis Courts
- Youth Program Enrichment Center, Parkway Recreation Center

**For more information on how a mother and her children
can get help with housing and supportive services
call (315) 734-9608 ext. 226 / 402
Ask for - A New Start @ JPA Supportive Housing Program**